



2 February 2023

Ms Fiona Howard (Care of Rebecca Marshall)

President

Wentworth District Rowing Club

PO Box 95

Wentworth NSW 2648

wentworthdrc@gmail.com

Dear Madam

**RE: Notification of Activity – Wentworth Health Service Redevelopment – 24 Hospital Road, Wentworth**

NSW Health Infrastructure (HI), is proposing to carry out demolition works and the erection of new buildings at Wentworth Health Service / Wentworth Hospital (Lot 1 of DP 1136392) in the comprehensive redevelopment of the hospital.

While this proposal does not require development consent from Council, we are required to assess its likely impacts in accordance with Part 5 of the *Environmental Planning and Assessment Act 1979*. In accordance with section 2.62(2) of the *State Environmental Planning Policy (Transport and Infrastructure) 2021*, we are notifying the club as an occupier of adjoining land of our intention to carry out the activity and ask that you provide any comments on the proposal within 21 days from the date of this letter. These comments will then be considered in our assessment of the proposal.

For your information, a notification plan set indicating the location and extent of the works is enclosed. Generally, the proposed activity comprises the staged redevelopment of the hospital site to provide for the comprehensive replacement of existing health services with a new single-storey building, including a 19-bed inpatient unit, associated outpatient and community health services, and urgent care centre. New staff accommodation is also proposed. The works further involve retaining the existing levee bank but building the site up to the levee bank's height, as well as demolition of the existing main hospital building, site remediation works, and landscaping.

If you wish to comment on the proposal, please provide your feedback to Benjamin Ferry at [hi-info@health.nsw.gov.au](mailto:hi-info@health.nsw.gov.au) or NSW Health Infrastructure, Attention Benjamin Ferry, Locked Bag, St Leonards, NSW 1590.

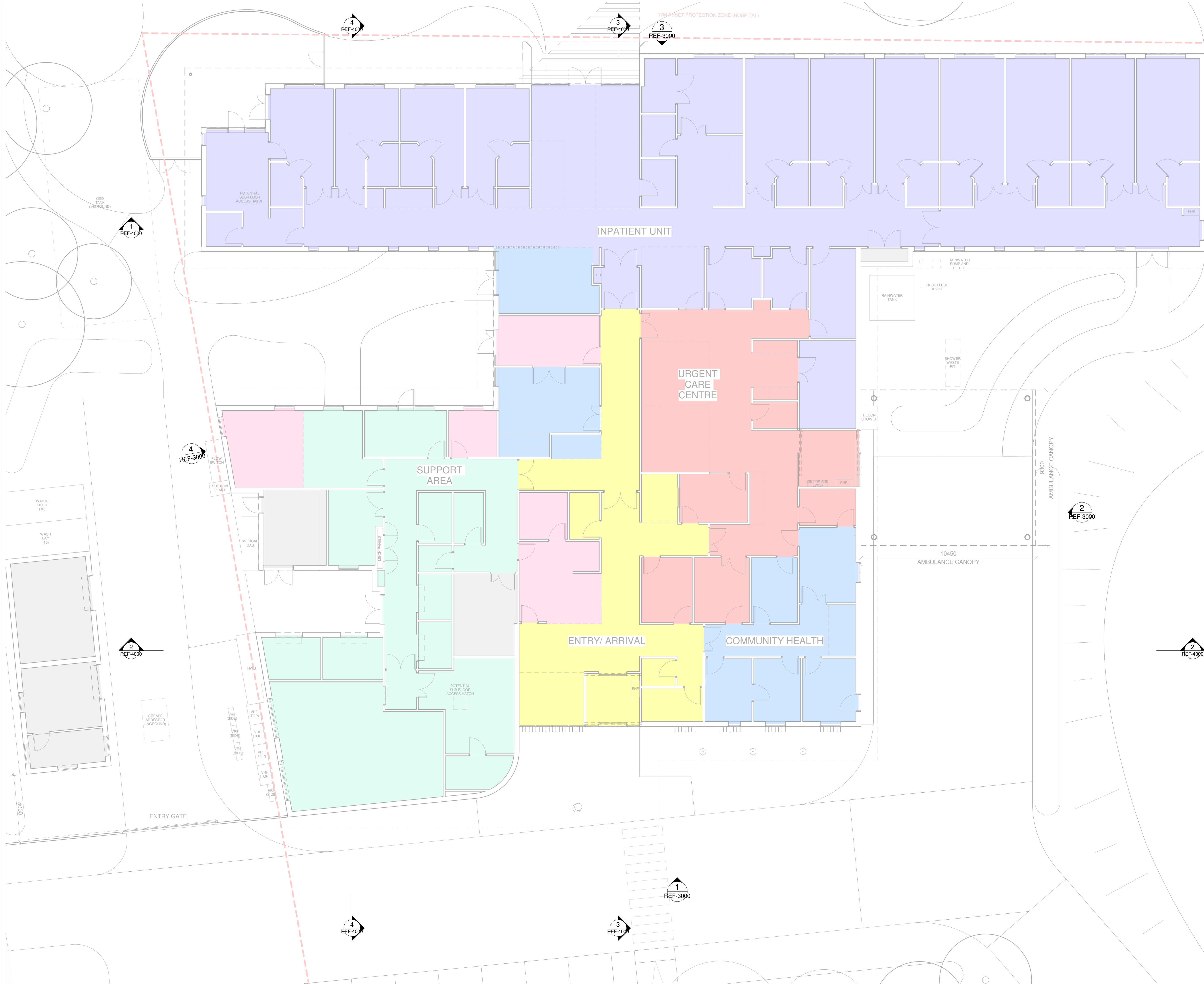
Yours sincerely

Benjamin Ferry

Senior Project Director

Rural and Regional

Health Infrastructure



MostynCopper  
PROJECT MANAGER  
MOSTYN COPPER

TTW Taylor  
Thomson  
Whitting  
STRUCTURE + CIVIL  
TTW

STEENSEN VARMING  
ELECTRICAL + MECHANICAL  
STEENSEN VARMING

Warren  
Smith  
Consulting Engineers

HYDRAULIC + FIRE  
WARREN SMITH CONSULTING ENGINEERS

Issue				
No.	Date	Description	Dwn	Chkd
1	24.11.22	Ref Issue		
2	29.11.22	For Information		
3	15.12.22	Ref Issue	AK	PR
4	20.12.22	Ref Issue	AK	PR

+61 2 9922 2344  
Nominated Architect:  
Andrew Duffin NSW 5602  
NBRS & Partners Pty Ltd VIC 51197  
Project  
WENTWORTH HSR

at  
24 Hospital Rd  
Wentworth NSW 2648  
for  
Health Infrastructure

Drawing Title  
GENERAL ARRANGEMENT PLAN -  
GROUND

Date 20/12/2022 3:33:29 PM  
Scale 1 : 100 @ A1

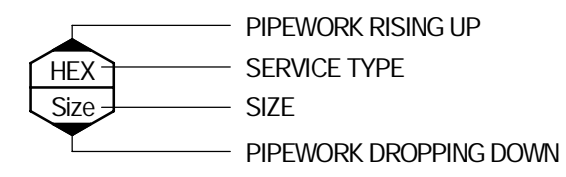
Drawing Reference  
21325-NBRS-AR-REF-1000  
Revision  
4

Any form of replication of this drawing in full or in part without the written permission of NBRS+PARTNERS Pty Ltd constitutes an infringement of the copyright.



## SYMBOLS

## PIPELINES



- STW STORMWATER DRAINAGE
- SS SUB-SOIL DRAINAGE
- SSRM SUB-SOIL RISING MAIN
- S SEWER DRAINAGE
- SRM SEWER RISING MAIN
- SSST SEWER DRAINAGE STACK
- SCV SEWER CHAMBER VENT
- TW TRADE WASTE
- V VENT PIPE
- OF OVERFLOW
- NG NATURAL GAS
- PCWRM POTABLE COLD WATER RISING MAIN
- PCW POTABLE COLD WATER SERVICE
- PHW POTABLE HOT WATER SERVICE
- PHMF POTABLE HOT WATER FLOW
- PHWR POTABLE HOT WATER RETURN
- PWW POTABLE WARM WATER
- RCW RECYCLED COLD WATER

- EXISTING SERVICE
- EXISTING SERVICE TO BE REMOVED
- CONCRETE ENCASE PIPEWORK
- INSULATED PIPEWORK
- PIPE DROP TO OR RISE FROM
- PIPE TEE DROP
- PIPE TEE RISE
- ELECTRICAL WIRING IN CONDUIT
- VERTICAL PIPE RISER IN DRAINAGE
- FLOW DIRECTIONAL ARROWS ON ALL PIPING SERVICES
- PIPE FALL

## VALVES (SCHEMATIC)

- BALL VALVE
- GATE VALVE
- STOP TAP
- DOUBLE CHECK VALVE IN WATER PIPELINES
- CHECK VALVE IN WATER PIPELINES
- REFLUX VALVE IN DRAINAGE PIPELINE
- PRESSURE REDUCTION VALVE
- PRESSURE LIMITING VALVE
- SWING CHECK VALVE WITH 3mm HOLE IN FLAP
- STAD VALVE
- SOLENOID VALVE
- MOTORIZED VALVE
- REDUCED PRESSURE ZONE DEVICE
- GAS REGULATOR

## SYSTEM ACCESSORIES

- PUMP
- FILTER
- CLEAROUT
- FLANGED JOINT
- UNION
- PIPELINE TERMINATED WITH BLANK FLANGE
- PIPELINE CAPPED OFF
- 3-WAY VALVE
- STRAINER
- OVERFLOW GULLY
- WATER / GAS METER
- BOUNDARY TRAP

## ABBREVIATIONS

- SEWER MANHOLE OR STORMWATER MANHOLE (CIRCULAR ACCESS CHAMBER)
- AUTHORITY MAIN (SCHEMATIC)
- STORMWATER PIT WITH COVER (BOLT DOWN)
- STORMWATER PIT WITH GRATE
- DOWN PIPE SPREADER
- NEW
- DRAINAGE CELL PLAN AREA
- DRAINAGE CELL VERTICAL INSTALLATION
- OVERLAND FLOW DIRECTIONAL ARROW

## WATER PIPING SYSTEMS

- PCW POTABLE COLD WATER
- PCWRM POTABLE COLD WATER RISING MAIN
- D DRAIN
- PHW POTABLE HOT WATER
- R RELIEF
- PTOW POTABLE TANK COLD WATER
- PPCW PUMPED POTABLE COLD WATER
- PWW POTABLE WARM WATER

## VALVES

- BV BALL VALVE
- CV CHECK VALVE
- DCV DOUBLE CHECK VALVE
- DCV DOUBLE DETECTOR CHECK VALVE
- GV GATE VALVE
- HT HOSE TAP
- NRV NON-RETURN VALVE
- PHT PLANTER HOSE TAP
- PLV PRESSURE LIMITING VALVE
- PRV PRESSURE REDUCTION VALVE
- RPZ REDUCED PRESSURE ZONE DEVICE
- RV REFLUX VALVE
- SV STOP VALVE

## LEVELS

- AHD AUSTRALIAN HEIGHT DATUM
- CL CEILING LEVEL
- FFL FINISHED FLOOR LEVEL
- GL GROUND LEVEL
- HVL HIGH LEVEL
- IL INVERT LEVEL
- LL LOW LEVEL
- ML MID LEVEL
- RL REDUCED LEVEL
- USL UNDERSIDE FLOOR
- USFL UNDERSIDE FLOOR
- TK TOP OF KERB

## MATERIALS

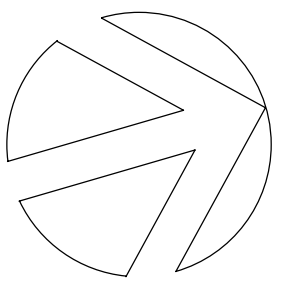
- BR BRASS
- CI CAST IRON
- CICL CAST IRON CEMENT LINED
- CONC CONCRETE
- CP CHROMIUM PLATED
- Cu COPPER
- DICL DUCTILE IRON CEMENT LINED
- FRC FIBRE REINFORCED CEMENT
- GMS GALVANISED MILD STEEL
- HDPE HIGH DENSITY POLYETHYLENE
- PE POLYETHYLENE
- PP POLYPROPYLENE
- RC REINFORCED CONCRETE
- RCP REINFORCED CONCRETE PIPE
- SS STAINLESS STEEL
- uPVC UNPLASTICISED POLYVINYL CHLORIDE

DO NOT SCALE FROM DRAWINGS. CHECK & VERIFY ALL DIMENSIONS & LEVELS BEFORE COMMENCEMENT OF ANY WORK.

THIS DRAWING IS REQUIRED TO BE PRINTED IN COLOUR. FAILURE TO DO SO MAY RESULT IN LOSS OF INFORMATION.

THIS DRAWING IS NOT TO BE COPIED IN PART OR WHOLE WITHOUT WRITTEN PERMISSION FROM WARREN SMITH CONSULTING ENGINEERS.

NORTH POINT



## NOTES

REV	AMENDMENT	DATE
1	SCHEMATIC DESIGN	20/12/2022

## HYDRAULIC SERVICES



## WARREN SMITH CONSULTING ENGINEERS

SINCE 1981.

NSW	VIC
9/233 Castlereagh St, Sydney 2000 NSW Australia	Suite 7.03, 365 Little Collins St, Melbourne 3000 VIC Australia
PH +61 (2) 9299 1312	PH +61 (3) 8648 9942
wsp@warrensmith.com.au	
www.warrensmith.com.au	
ACN 002 197 088	ABN 36 300 430 126

Hydraulic Fire Civil Utilities Infrastructure

## ARCHITECT

**NBR**

+61 2 9922 2344  
Nominated Architect:  
Andrew Duffin NSW 5602  
NBR & Partners Pty Ltd VIC 51197

nbrs.com.au  
ABN 16 002 247 565

## CLIENT



**Health  
Infrastructure**

## PROJECT

**WENTWORTH HEALTH SERVICE  
REDEVELOPMENT**

24 Hospital Rd  
Wentworth NSW 2648

## TITLE

**SITE PLAN - HYDRAULIC SERVICES**

## SCALE

As indicated

## DATE

20/12/2022

## JOB No

7517000

## DRAWN

RB

## DESIGNED

VG

## CHECKED

TW

## APPROVED

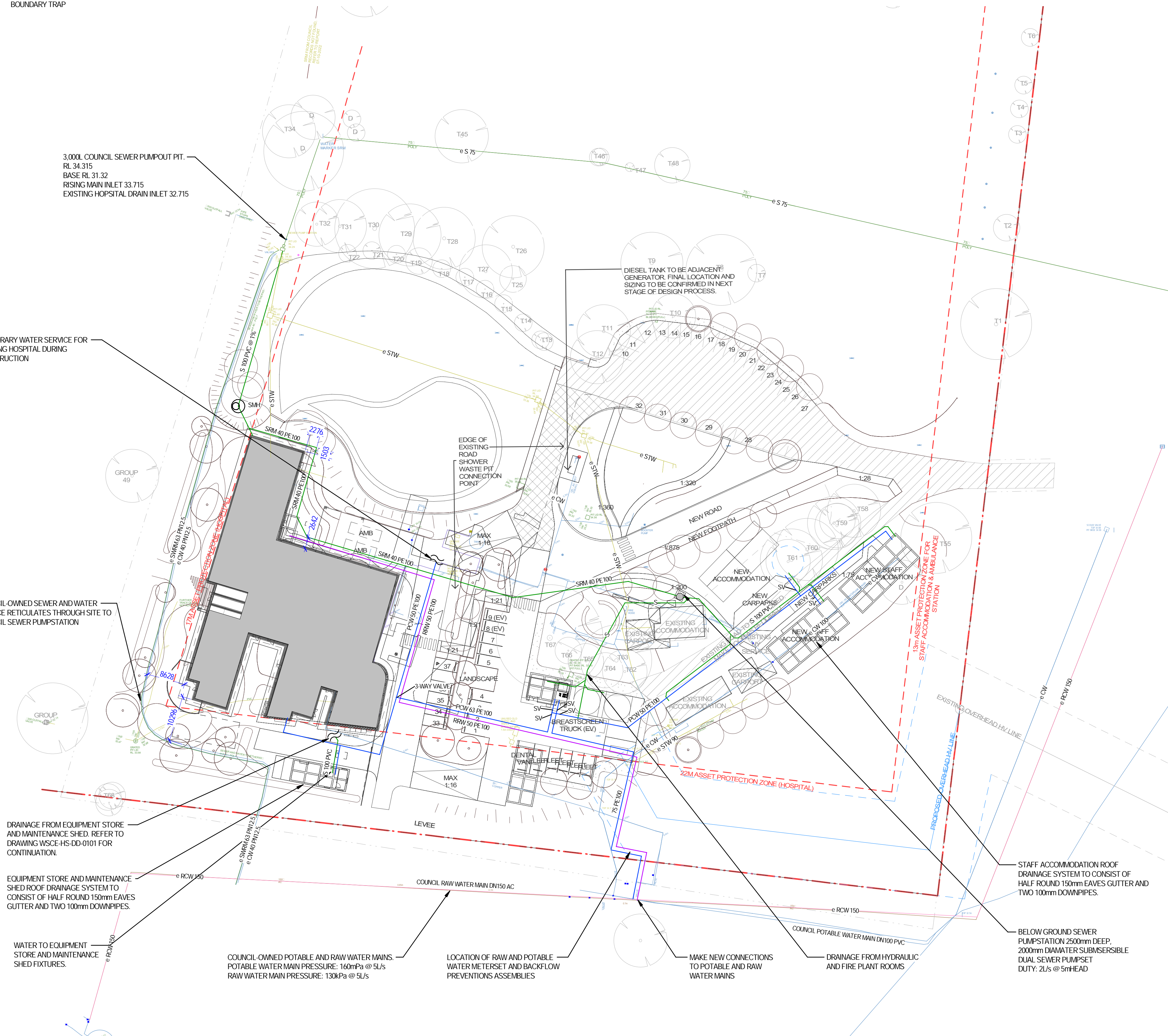
TW

## DRAWING No

WSCE-HS-DD-0001

## REV

1



DRAINAGE FROM EQUIPMENT STORE AND MAINTENANCE SHED. REFER TO DRAWING WSCE-HS-DD-0101 FOR CONTINUATION.

EQUIPMENT STORE AND MAINTENANCE SHED ROOF DRAINAGE SYSTEM TO CONSIST OF HALF ROUND 150mm EAVES GUTTER AND TWO 100mm DOWNPIPES.

WATER TO EQUIPMENT STORE AND MAINTENANCE SHED FIXTURES.

COUNCIL-OWNED POTABLE AND RAW WATER MAINS. POTABLE WATER MAIN PRESSURE: 160mPa @ 5L/s. RAW WATER MAIN PRESSURE: 130kPa @ 5L/s.

LOCATION OF RAW AND POTABLE WATER METERSET AND BACKFLOW PREVENTIONS ASSEMBLIES.

MAKE NEW CONNECTIONS TO POTABLE AND RAW WATER MAINS.

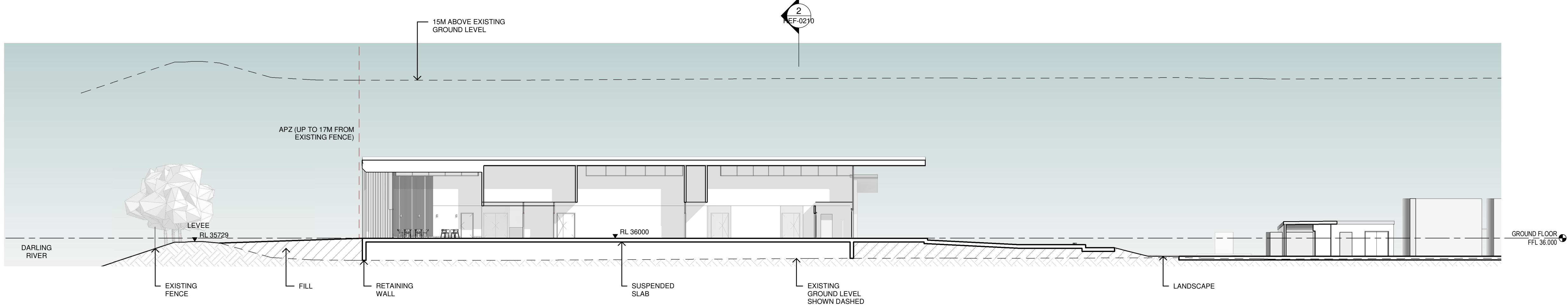
DRAINAGE FROM HYDRAULIC AND FIRE PLANT ROOMS.

STAFF ACCOMMODATION ROOF DRAINAGE SYSTEM TO CONSIST OF HALF ROUND 150mm EAVES GUTTER AND TWO 100mm DOWNPIPES.

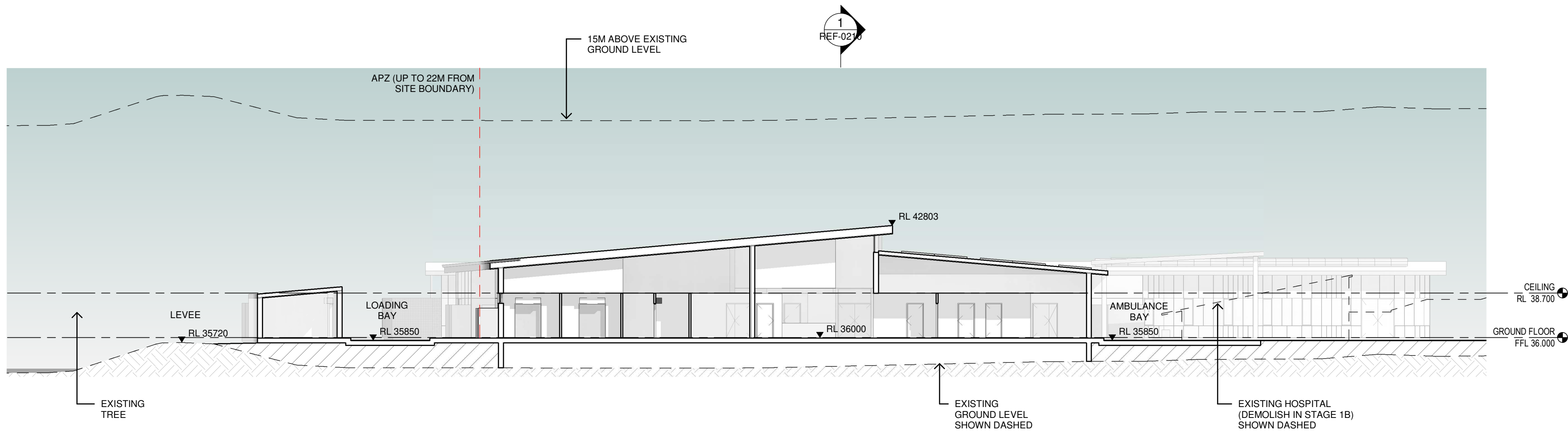
BELOW GROUND SEWER PUMP/STATION 2500mm DEEP, 2000mm DIAMETER SUBMERSIBLE DUAL SEWER PUMP/SET DUTY: 2L/s @ 5m HEAD.

SHEET SIZE: A1





1 SITE SECTION - EAST-WEST  
1 : 200



2 SITE SECTION - NORTH-SOUTH  
1 : 200

**MostynCopper**  
PROJECT MANAGER  
MOSTYN COPPER

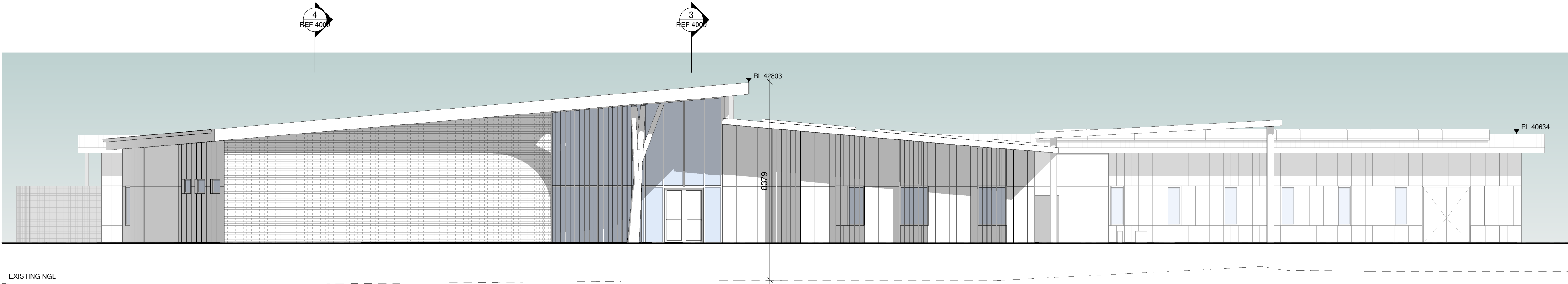
**TTW** Taylor  
Thomson  
Whitting  
STRUCTURE + CIVIL  
TTW

**STEENSEN VARMING**  
ELECTRICAL + MECHANICAL  
STEENSEN VARMING

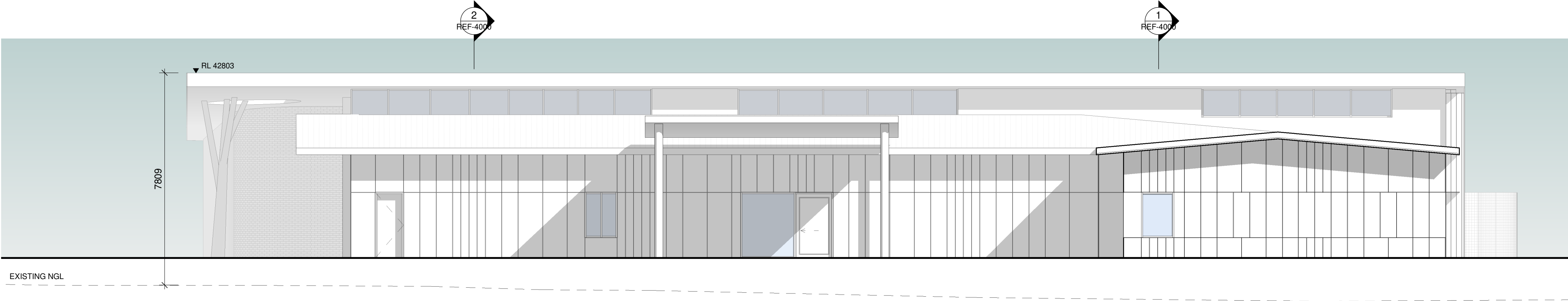
**Warren  
Smith**  
Consulting Engineers

HYDRAULIC + FIRE  
WARREN SMITH CONSULTING ENGINEERS

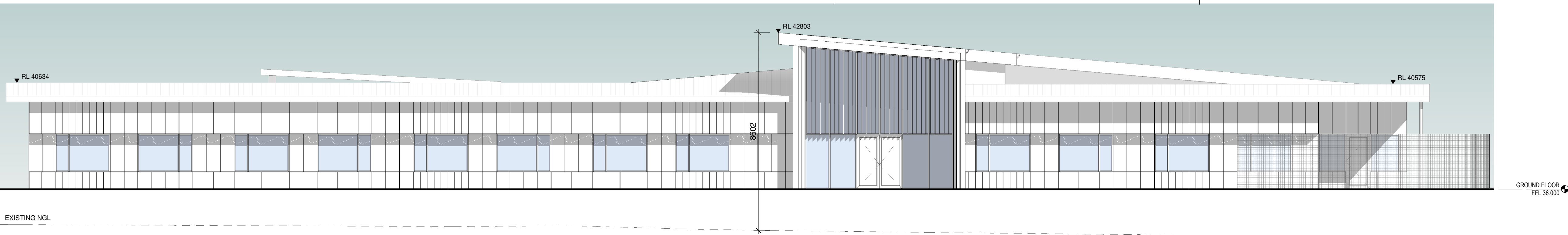
Issue				
No.	Date	Description	Dwn	Chkd
1	24.11.22	Ref Issue		
2	29.11.22	For Information		
3	15.12.22	Ref Issue	AK	PR
4	20.12.22	Ref Issue	AK	PR



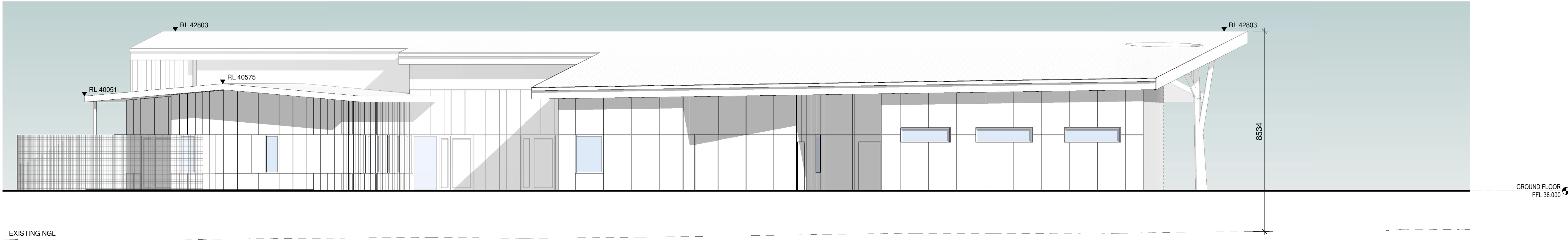
1 EXTERNAL ELEVATION - EAST  
1 : 100



2 EXTERNAL ELEVATION - NORTH  
1 : 100



3 EXTERNAL ELEVATION - WEST  
1 : 100



4 EXTERNAL ELEVATION - SOUTH  
1 : 100

**MostynCopper**  
PROJECT MANAGER  
MOSTYN COPPER

**TTW** Taylor  
Thomson  
Whitting  
STRUCTURE + CIVIL  
TTW

**STEENSEN VARMING**  
ELECTRICAL + MECHANICAL  
STEENSEN VARMING

**Warren  
Smith**  
Consulting Engineers

HYDRAULIC + FIRE  
WARREN SMITH CONSULTING ENGINEERS

Issue No.	Date	Description	Dwn	Chkd
1	24.11.22	Ref Issue		
2	29.11.22	For Information		
3	15.12.22	Ref Issue	AK	PR
4	20.12.22	Ref Issue	AK	PR